



ORII MARBLE

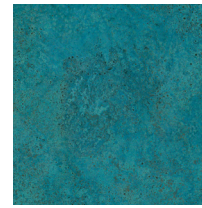
Copper wall panel / JAPAN Traditional CRAFT

Applying the traditional Copper casting "copper coloring" technique, this gorgeous wall panel is made of thin 0.4 mm copper sheets that are colored by oxidation.

The colors and patterns created on the square copper plate are carefully finished one by one by craftsmen. Can be affixed to indoor walls and furniture. The patterns, colors, and gradations vary from piece to piece due to the production of Japanese craftsmen.

2017 Good Design Award.

"ORII MARBLE" is the 12 pcs set / 300 ×300mm thickness 0.4mm [weight: 330g each]



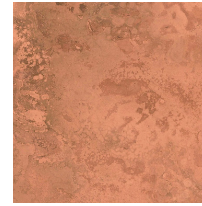
BLUE
Copper



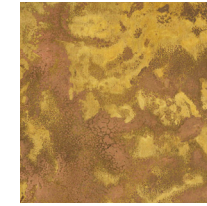
GREEN
Brass



COPPER RED
Copper



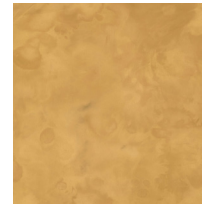
COPPER PINK
Copper



BRASS PINK
Brass



COPPER BROWN
Copper



YELLOW
Brass



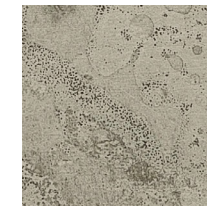
ANTIQUÉ BRASS
Brass



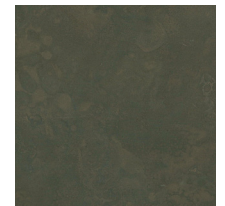
AMBER
Copper



SILVER
Copper



ANTIQUÉ SILVER
Brass



BLACK
Copper

Basic minimum size is 300*300mm [t0.4mm]

Other sizes handled are; 365*1200mm [t0.4mm], 1000*2000mm [t0.8mm]

Bending and cutting processes, thickness changes, etc. are quoted on a case-by-case basis.

The following precautions should be taken when handling the plates after coloring.

*Do not cut or bend.--The clear coating and oxide film will be damaged.

*Do not scratch with sharp objects.--Scratches and dents may cause discoloration.

*Do not apply anything to the colored surface.--Adhesive tape, glue, thinner, alcohol, acid, salt, etc. may damage or discolor the surface.

*Be careful not to drop or impact the product.--The thin plate may be deformed, warped, or bent if it is bumped.

Moving Toward A New Standard.

Takaoka City, in Toyama Prefecture, has been known for over 400 years as a major center for production of castings, including copperware. "momentum factory Orii" was originally founded in 1950 as the "Orii-Chakusyokujo". Since then, the company has worked with various copper products such as Buddhist ornaments, bronze statues and other arts and crafts.

"Copper coloring" is not painting, but rather a traditional technique for developing vivid colors on copper and brass through the use of chemicals and flames. Techniques have evolved to further bring forth the beauty of tradition and metal for use in customized works installed at hotels, restaurants and commercial facilities. Such new uses are the foundation for the next generation of coloring.



momentum factory Orii CO., Ltd.

530 Nagae, Takaoka, Toyama 933-0959 Japan

+81-766-23-9685

info@mf-orii.co.jp <https://www.mf-orii.co.jp/>